



Ford Casting Identification

Ford makes it easy for enthusiasts to identify corporate castings. Please understand that Ford casting numbers aren't always the same as part or engineering numbers. Identifying a casting is a matter of knowing what Ford part and casting numbers mean. Here's what you can expect.

TYPICAL FORD PART/CASTING NUMBER

It's easy to identify Ford castings once you understand the system because there's not only a casting number, but a casting date code that tells you exactly when the piece was cast. Not only that, a date code is stamped in the piece, which tells us the date of manufacture. With these two date codes, we know when the piece was cast and when it was ultimately manufactured.

Ford part numbers can be found in the Ford Master Parts Catalog on microfilm at your Ford dealer or in one of those obsolete 900-pound parts catalogs from the good old days. Because Ford has made a great many parts for vintage Fords obsolete, these part numbers don't always exist in present day dealer microfilms. This is called "NR" or "not replaced" which means it is no longer available from Ford. However, casting numbers on parts tell us a lot about the piece.

Here's how a typical Ford part/casting number breaks down.

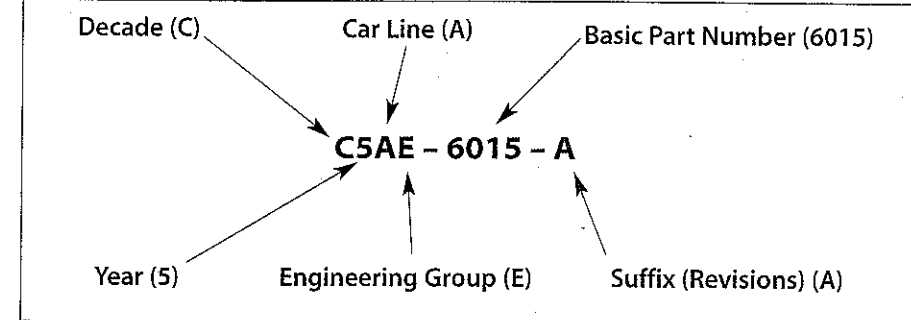
- First Position indicates Decade (C5AE-6015-A):

B = 1950-59
C = 1960-69
D = 1970-79
E = 1980-89
F = 1990-99

- Second Position indicates Year of Decade (C5AE-6015-A):

- Third Position indicates Car Line (C5AE-6015-A):

A = Ford
D = Falcon
G = Comet, Montego, Cyclone
J = Marine & Industrial



- M = Mercury
- O = Fairlane & Torino
- S = Thunderbird
- T = Ford Truck
- V = Lincoln
- W = Cougar
- Z = Mustang

- Fourth Position indicates the Engineering Group (C5AE-6015-A):

A = Chassis Group
B = Body Group
E = Engine Group

If the item is a service part, the fourth position then indicates the applicable division as follows.

- Z = Ford Division
- Y = Lincoln-Mercury
- X = Original Ford Muscle Parts Program
- M = Ford Motorsport SVO or Ford-Mexico

- Four Digit Number indicates the Basic Part Number (C5AE-6015-A):

The basic part number tells us what the basic part is. For example, "6015" in the example above is a cylinder block. The number "9510" is carburetors, and so on. Each type of Ford part, right down to brackets and hardware, has a basic part number. This makes finding them easier in the Ford Master Parts Catalog.

- The last character is the Suffix (C5AE-6015-A):

The suffix indicates the revision under the part number. "A" indicates an original part. "B" indicates first revision, "C" second revision,

"D" third revision, and so on. During Ford's learning curve with emissions in the 1970s, it was not uncommon to see "AA," "AB" and so on in cylinder head casting suffix.

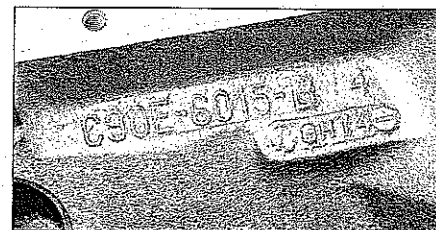
Date Codes

Date codes can be found two ways in Ford castings. When the four-character date code is cast into the piece, this indicates when the piece was cast at the foundry. When it is stamped, this indicates the date of component manufacture.

5 A 26
Year (5)/Month (A)/Day (26)

TYPICAL DATE CODE

Another area of interest to Ford buffs is where the piece was cast or forged. With Ford engines, we've seen three foundry identification marks. A "C" circled around an "F" indicates the Cleveland Iron Foundry. "DIF" indicates Dearborn Iron Foundry. "WF" or "WIF" indicates Windsor Iron Foundry. Single and double digit numbers typically indicate cavity numbers in the mold.



Ford Small-Block Engine Block Information

(Bold Indicates High Performance)

Displacement Years Available	Casting Number (6015)	Part Number (6015)	Bore Size	Deck Height	Other Information	Displacement Years Available	Casting Number (6015)	Part Number (6015)	Bore Size	Deck Height	Other Information
221ci 1962-63	C2OE-G	C4OZ-B	3.50"	8.206"	Five-bolt bell.	302ci 1978-79		D8VE-AA	4.00"	8.206"	
221ci 1962-63	C3OE-A	C4OZ-B	3.50"	8.206"	Five-bolt bell.	302ci 1980-82		E0AE-DD	4.00"	8.206"	
260ci 1962-64	C3OE-B	C4OZ-B	3.80"	8.206"	Five-bolt bell.	302ci 1983-84		E2AE-KA	4.00"	8.206"	
260ci 1962-64	C3OE-C	C4OZ-B	3.80"	8.206"	Five-bolt bell.	302ci 1985		E5AE-HA	4.00"	8.206"	Roller Tappet Block
260ci 1962-64	C4OE-B	C4OZ-B	3.80"	8.206"	Five-bolt bell.						Heavier Block
260ci 1962-64	C4OE-D	C4OZ-B	3.80"	8.206"	Five-bolt bell.	302ci 1986-93		E6SE-DC	4.00"	8.206"	
260ci 1962-64	C4OE-E	C4OZ-B	3.80"	8.206"	Five-bolt bell.	302ci 1994-01		E7TE-PA	4.00"	8.206"	
289ci 1963-64	C3AE-N	C4AZ-B	4.00"	8.206"	Five-bolt bell.	351W 1969-70	C9OE-B	C9OZ-B	4.00"	9.480"	
289ci 1963-64	C4OE-C	C4AZ-B	4.00"	8.206"	Five-bolt bell.			D1AZ-E			
289ci 1963-64	C4OE-F	C4AZ-B	4.00"	8.206"	Five-bolt bell.	351W 1971-74	D2AE-BA	C9OZ-B	4.00"	9.480"	9.503" deck height in 1974
289ci 1963-64	C4AE	C4AZ-B	4.00"	8.206"	Five-bolt bell.			D1AZ-E	4.00"	9.480"	9.503" deck height in 1974
289ci 1963-64	C4DE	C4AZ-B	4.00"	8.206"	Five-bolt bell.						
289ci 1963-64	C3OE-B	C4OZ-E	4.00"	8.206"	High Perf.	351W 1971-74	D4AE-AA	C9OZ-B	4.00"	9.480"	
					Five-bolt bell.			D1AZ-E			
289ci 1963-64	C4OE-B	C4OZ-E	4.00"	8.206"	High Perf.	351W 1975-84	D4AE-DA	C9OZ-B	4.00"	9.503"	
					Five-bolt bell.			D1AZ-E			
289ci 1965-67	C5AE-E	C5AZ-E	4.00"	8.206"	Six-bolt bell.	351W 1985-86		E5AE-CA	4.00"	9.503"	
		C5OZ-D				351W 1987-00		E7TE-PA	4.00"	9.503"	
289ci 1965-67	C5OE-C	C5AZ-E	4.00"	8.206"	Six-bolt bell.	302ci 1969-70	C8FE	D1ZZ-B	4.00"	8.209"	Boss 302
		C5OZ-D						D1ZZ-C			302 Tunnel-Port block
289ci 1965-67	C6AE-C	C5AZ-E	4.00"	8.206"	Six-bolt bell.	302ci 1969-70	C9ZE	D1ZZ-B	4.00"	8.209"	Boss 302
		C5OZ-D						D1ZZ-C			
289ci 1965-67	C5AE-E	C5OZ-D	4.00"	8.206"	High Perf.	351C 1970-71	D0AE-A	D0AZ-D	4.00"	9.206"	2-bolt main
					Six-bolt bell.	351C 1970-71	D0AE-C	D0AZ-D	4.00"	9.206"	2-bolt main
302ci 1968-69	C8OE-A	D1TZ-E	4.00"	8.206"	Extended cylinder skirts	351C 1970-71	D0AE-E	D0AZ-D	4.00"	9.206"	2-bolt main
		D2OZ-C			"302" in valley	351C 1970-71	D0AE-G	D0AZ-D	4.00"	9.206"	2-bolt main
302ci 1968	C8TE-B	D1TZ-E	4.00"	8.206"	Truck block	351C 1970-71	D0AE-J	D0AZ-D	4.00"	9.206"	2-bolt main
302ci 1969	C9TE-C	D1TZ-E	4.00"	8.206"	Truck block	351C 1970-71	D0AE-L	D0AZ-D	4.00"	9.206"	2-bolt main
302ci 1970-74	D1OE-AA	D1TZ-E	4.00"	8.206"	8.229" deck height in 1973-76	351C 1972-74	D2AE-DA	D0AZ-D	4.00"	9.206"	2-bolt main
		D2OZ-C				351C Australian		D6HM-L	4.00"	9.206"	4-bolt main
		D1ZZ-C				351C 1971	D0AE-B				
302ci 1971-74	D1TE-AA	D1TZ-E	4.00"	8.206"	Truck block		D0AE-D				
		D2OZ-C					D0AE-F				
		D1ZZ-C					D0AE-H				
302ci 1974	D4DE-AA		4.00"	8.206"	8.229" deck height in 1973-76	351C 1971	D1ZE-A	D1ZZ-D	4.00"	9.206"	Boss 351
							D1ZE-B				4-bolt main
302ci 1975-77	D5ZY-AA		4.00"	8.206"	8.229" deck height in 1973-76	351C 1971-74	D2AE-CA	D1ZZ-A	4.00"	9.206"	Cobra Jet
							D3ZZ-A				
						351C 1972	D2AE-EA	D1ZZ-D	4.00"	9.206"	High Output 4-bolt main